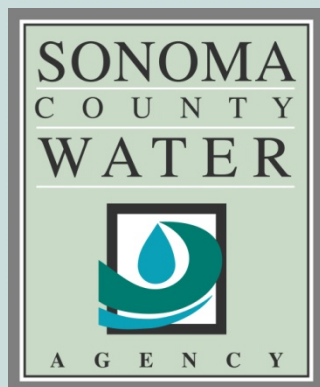


Answering the Challenge:

A Look at SCWA's Shift in Business Plan and Collaboration Efforts to Meet Carbon Free Water Goals



Cordel Stillman
Capital Projects Manager

Applied Solutions Conference
Santa Fe, New Mexico
October 12-14 2009



Sonoma County Water Agency



- Wholesale Potable Water Supply
- 3 Counties
- 8 Contractors
- Over 600,000 People
- 6 Wastewater Treatment Plants
- Flood Control

Shifting Our Business Plan

- Traditional Roles
 - Water Delivery
 - Wastewater Treatment
 - Flood Control
- Non-Traditional Role
 - Leadership in Energy Management



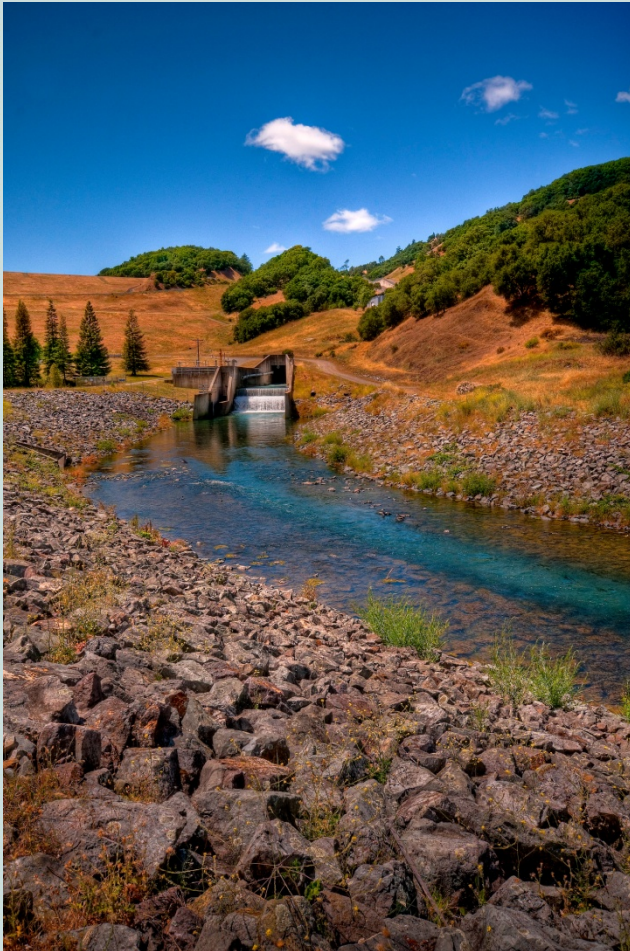
Shifting Our Business Plan (Cont'd)



- SCWA has Legal Authority to Generate & Sell Power
 - Develop New, Renewable Supplies
- Needed Leadership
 - Strong, Visionary
 - Willing to Take Risks



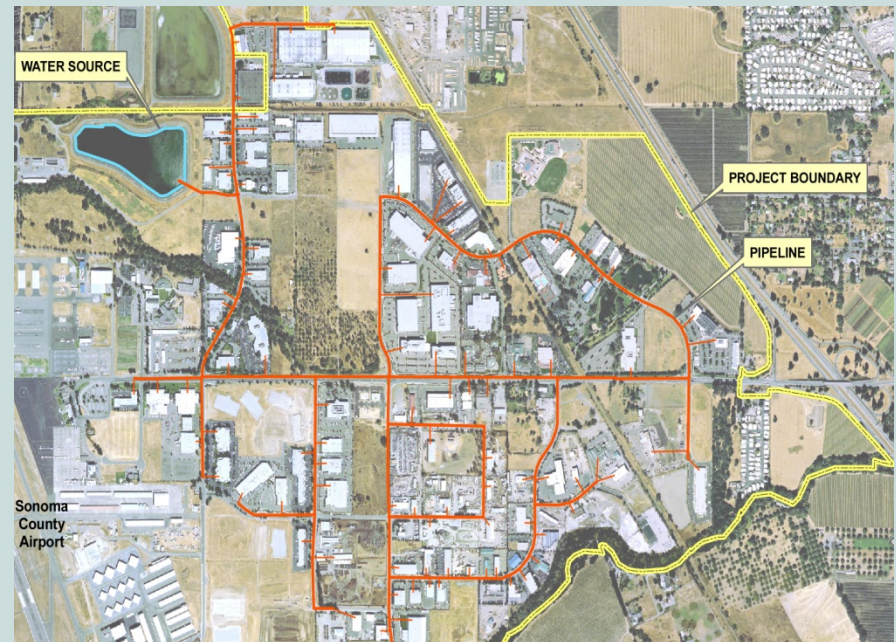
Answering the Challenge



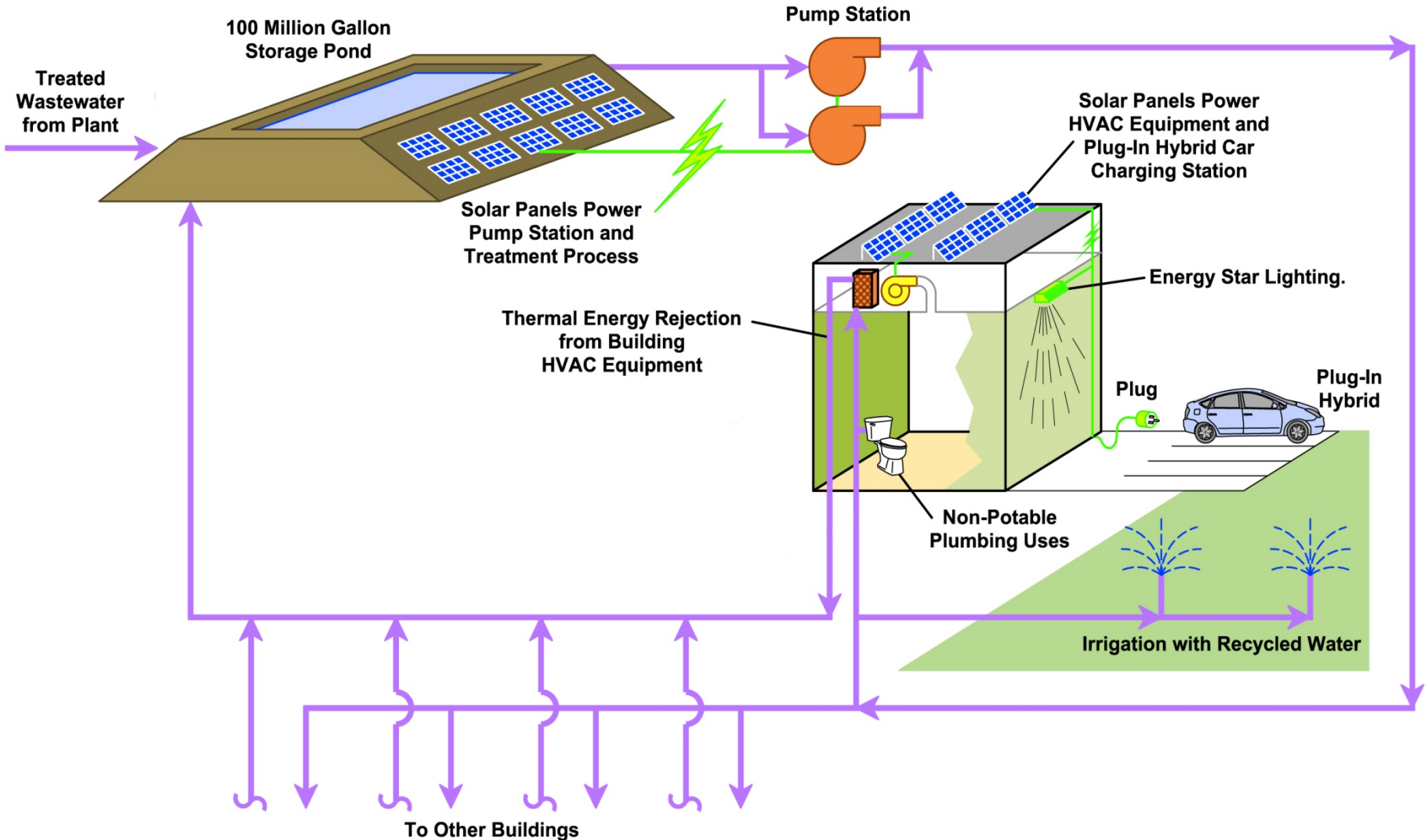
- Photovoltaic Systems
- Hydroelectric Dam
- Hybrid/Electric Vehicles
- Electric Charging Stations
- Geoexchange
- Biodigester (Poultry Waste)
- Hydrokinetic (Wave) Energy
- Water Conservation Programs
- SCEIP

R G E E P

- Regional GeoExchange Energy Efficiency Project
- Airport Business Center: 82 Buildings
 - 60% Office, 40% industrial and retail
- Wastewater piped through park to heat and cool buildings
 - Offset 50% of heating and cooling
- Lower remaining energy demand through efficiency retrofits
- Bring park to zero-net energy use through solar PV



R G E E P (Cont'd)



Assembly Bill 881



- Sonoma County Regional Climate Protection Authority
 - First-of-it's-kind bill
 - Sonoma County Transportation Authority
 - Management of carbon credits and/or allocations
 - Renewable Energy Secure Communities (RESCo)
 - Develop & enhance County's renewable energy portfolio

Sonoma County Carbon Allocation



- California Air Resource Board
- 1st local allocation in CA
 - Test case
 - Requires set up of a replicable accounting protocol
 - Exposes County to risk if goals not achieved



Other Opportunities

- Municipal Roof Space & Parking Lots
- Investigate Public/Private Partnerships
- Feed in Tariffs
- Production Tax Credits
- Accelerated Depreciation
- Municipal Bond Financing

Power of Collaboration

- Leveraging of Assets & Strengths of Others
- Mutually Beneficial Arrangements



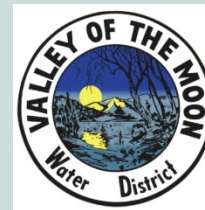
- Ex. 1: PV on County of Sonoma Airport, etc.
 - Large potential for PV projects on municipal properties



- Ex. 2: RESCO
 - Partnership with local non-profit and LANL
 - \$1,000,000 Grant from CEC
 - Study local GHG emissions and renewable energy

Power of Collaboration (Cont'd)

- Ex. 3: Collaboration Tool in Managing Water System
 - Developed by IBM & SCWA
 - SCWA and 8 city/district contractors





Any
Questions?

For Additional Information:

Amy Bolten, Public Information Officer

Office: 707-547-1980, Email: amy.bolten@scwa.ca.gov