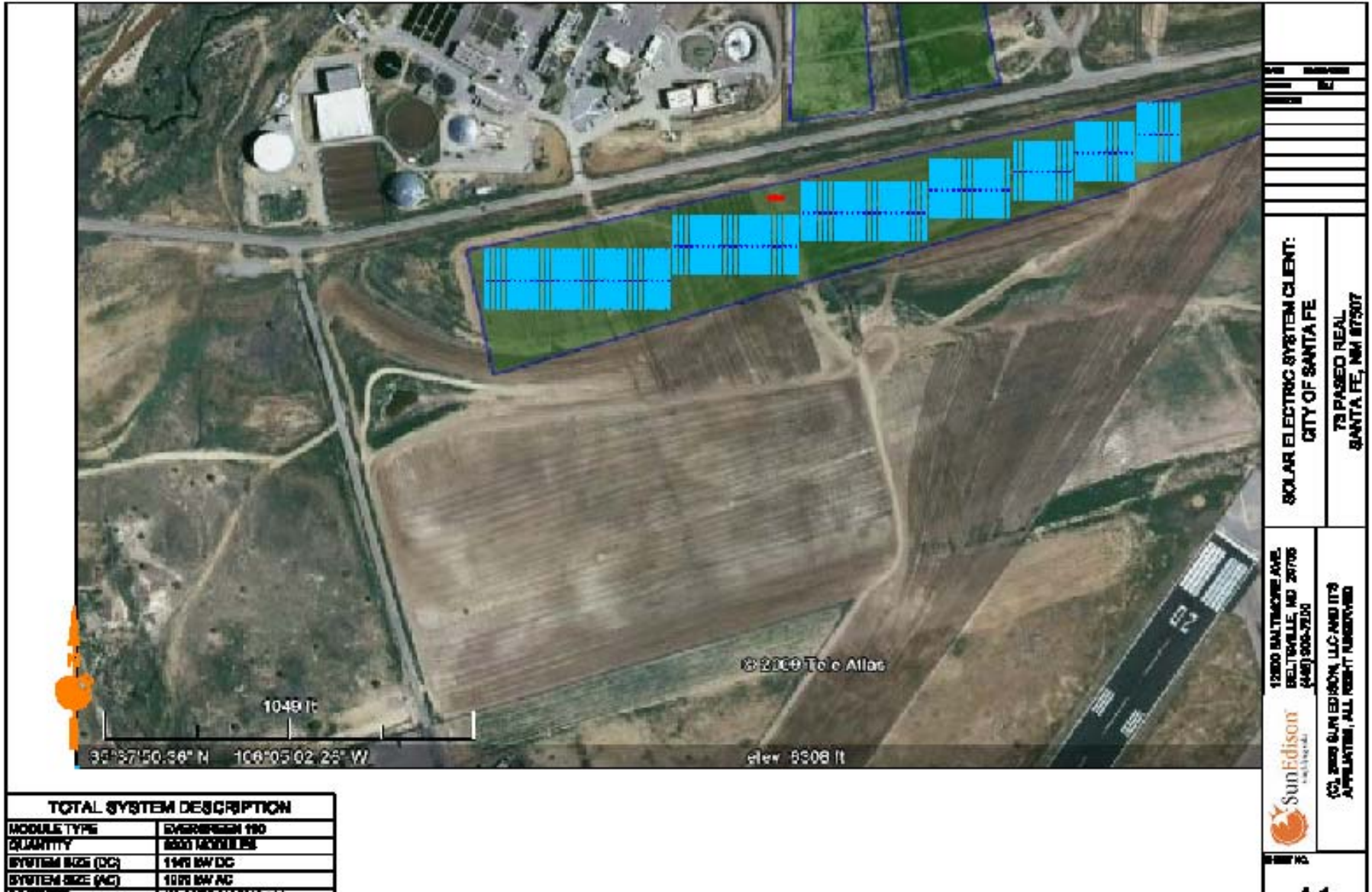


# Applied Solutions Conference

October 12, 2009



# Renewable Energy



TOTAL SYSTEM DESCRIPTION	
MODULE TYPE	EVERGREEN 190
QUANTITY	6000 MODULES
SYSTEM SIZE (DC)	1149 kW DC
SYSTEM SIZE (AC)	1078 kW AC

	
12800 BALTIMORE AVE. BELTSVILLE, MD 20705 (443) 908-7000	
SOLAR ELECTRIC SYSTEM CLIENT: CITY OF SANTA FE	
TS PASSED REAL SANTA FE, NM 87507	
©2009 SunEdison, LLC AND ITS AFFILIATES. ALL RIGHTS RESERVED	

# Energy Efficiency

- Energy Audits
  - 15 of 52 Facilities
  - College of Santa Fe – 50 Buildings
- Results
  - Building Envelope
  - Domestic HW
  - Lighting
  - HVAC & Boilers

# Project Upgrades

- Lighting RFB - \$400k for 20 Buildings
  - Payback 7-8 years
  - Utility Rebate \$80k or 20% of project cost
- HVAC & Building Controls
  - GCCC Building Controls
- Domestic Hot Water
- Building Envelope Upgrades
- Wastewater Division
  - Methane Recovery

# Cost & Outcomes

- Funding
  - ARRA \$780k EECBG
  - \$500k EMNRD
  - \$700k Wastewater Management Division
- City Operations Generate 77,000 Tons GHG/year
  - 39 Million kWhs/year
  - 1.6 Million Therms of Natural Gas/year
- Reduction in GHG emissions – 7000 Tons/year
  - Energy Efficiency - 2000 Tons/year – 2.6%
  - Renewable Energy - 4000 Tons/year – 5.2%