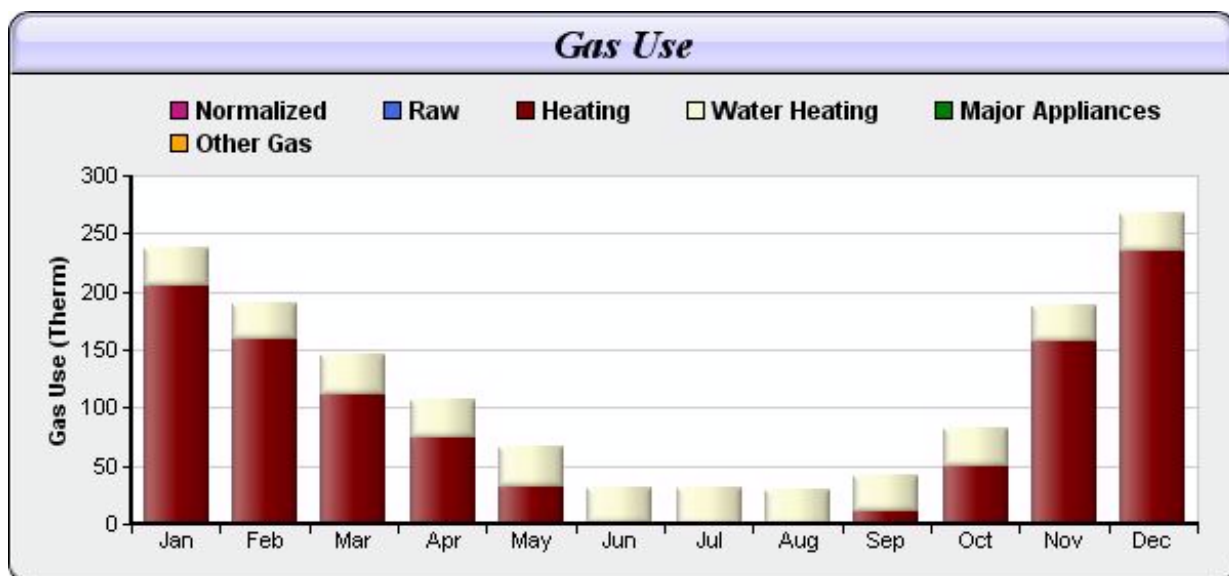
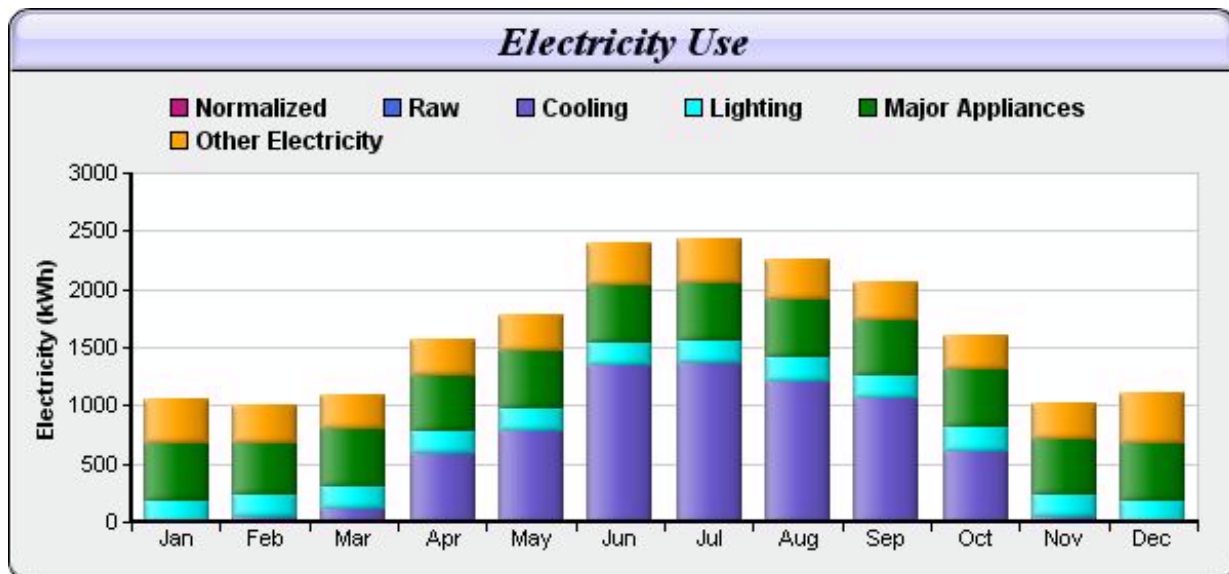
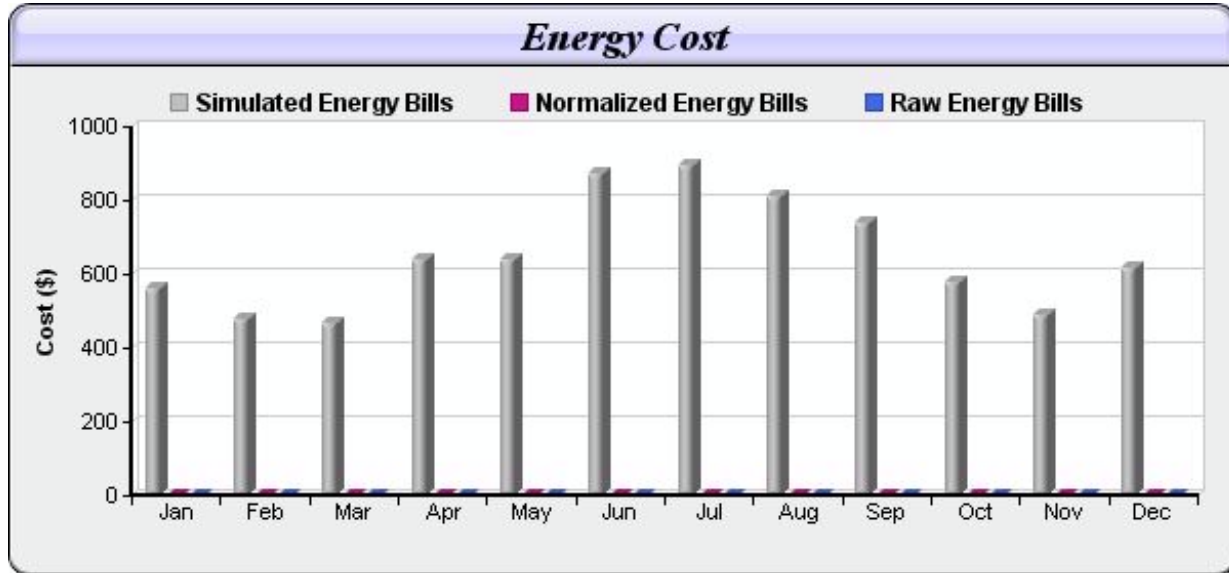


California Home Energy Consumption Analysis

Rating Number: CC1X-xxxxxxxxx EnergyPro Version: 5.1 Rating Date: July 1, 2011 Page 1 of 2



California Home Energy Consumption Analysis

Rating Number: CC1X-xxxxxxxxx EnergyPro Version: 5.1 Rating Date: July 1, 2011 Page 2 of 2

TABULAR REPORT

Month	Electricity		Gas		Total Cost
	Cost	kWh Used	Cost	Therms Used	
Jan	\$0.00	0	\$0.00	0	\$0.00
Feb	\$0.00	0	\$0.00	0	\$0.00
Mar	\$0.00	0	\$0.00	0	\$0.00
Apr	\$0.00	0	\$0.00	0	\$0.00
May	\$0.00	0	\$0.00	0	\$0.00
Jun	\$0.00	0	\$0.00	0	\$0.00
Jul	\$0.00	0	\$0.00	0	\$0.00
Aug	\$0.00	0	\$0.00	0	\$0.00
Sep	\$0.00	0	\$0.00	0	\$0.00
Oct	\$0.00	0	\$0.00	0	\$0.00
Nov	\$0.00	0	\$0.00	0	\$0.00
Dec	\$0.00	0	\$0.00	0	\$0.00

Utility Rates

Type	Electricity	Electricity	Gas	Gas
Name	PG&E E1 X	PG&E E1 X	PG&E G1 X	PG&E G1 X
Season	PG&E E1 X Winter	PG&E E1 X Summer	PG&E G1 X Winter	PG&E G1 X Summer
CO2	.69	.69	11.65	11.65
Meter Charge	\$0.00	\$0.00	\$0.00	\$0.00
Tier 1 Rate	\$0.115	\$0.115	\$0.918	\$0.918
Tier 1 Threshold	278	363	61	18
Tier 2 Rate	\$0.131	\$0.131	\$1.156	\$1.156
Tier 2 Threshold	361	471	0	0
Tier 3 Rate	\$0.261	\$0.261	\$0	\$0
Tier 3 Threshold	556	726	0	0