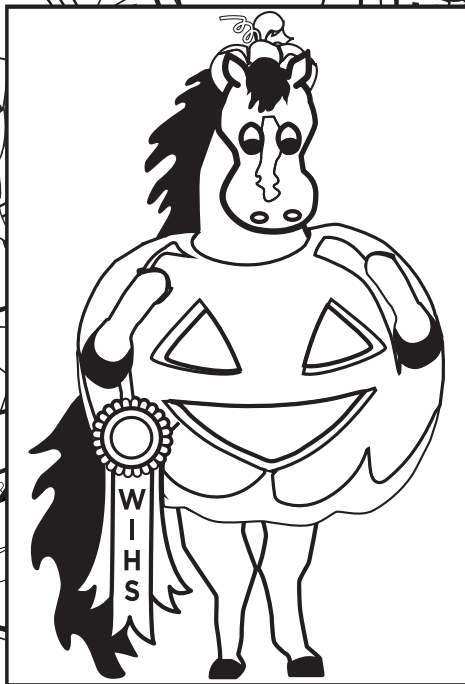


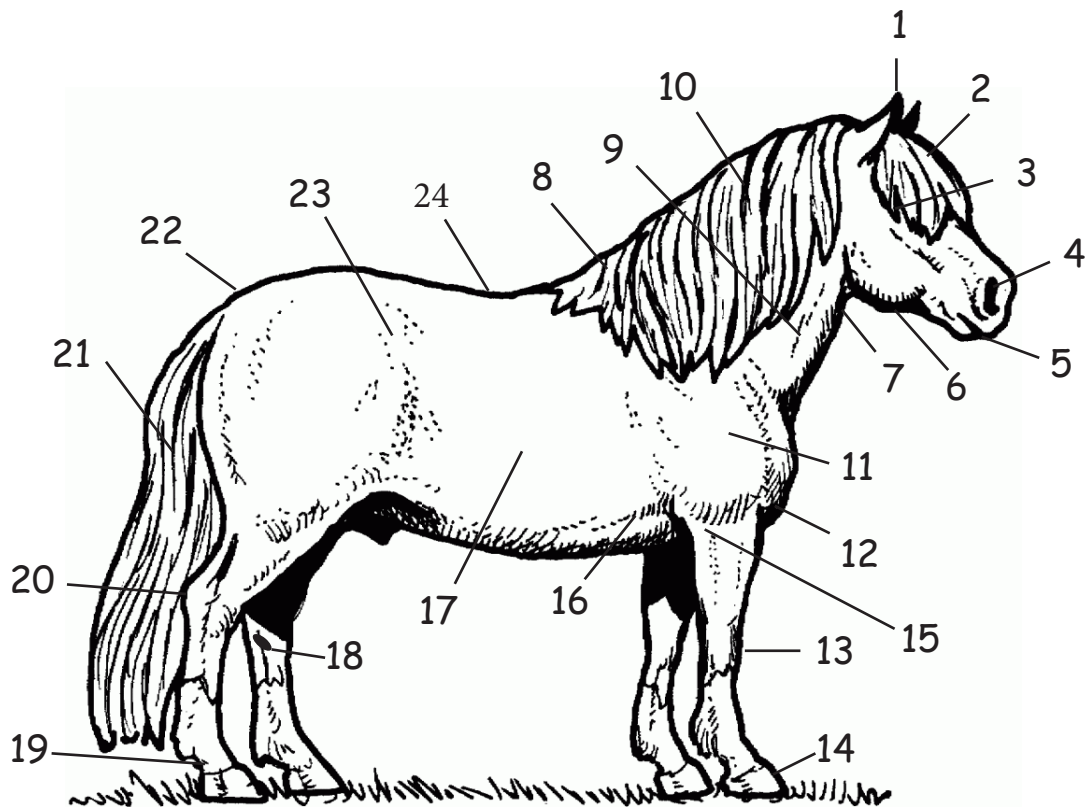


WIHS Barn Night Color & Solve





Parts of the Pony



Match the number with the part

___ EARS

___ EYE

___ NOSTRIL

___ NECK

___ WITHERS

___ SHOULDER

___ RIBS

___ GIRTH

___ CHEST

___ HOCK

___ ELBOW

___ MUZZLE

___ THROAT

___ PASTERN

___ HIP

___ JAW

___ FORELOCK

___ MANE

___ BACK

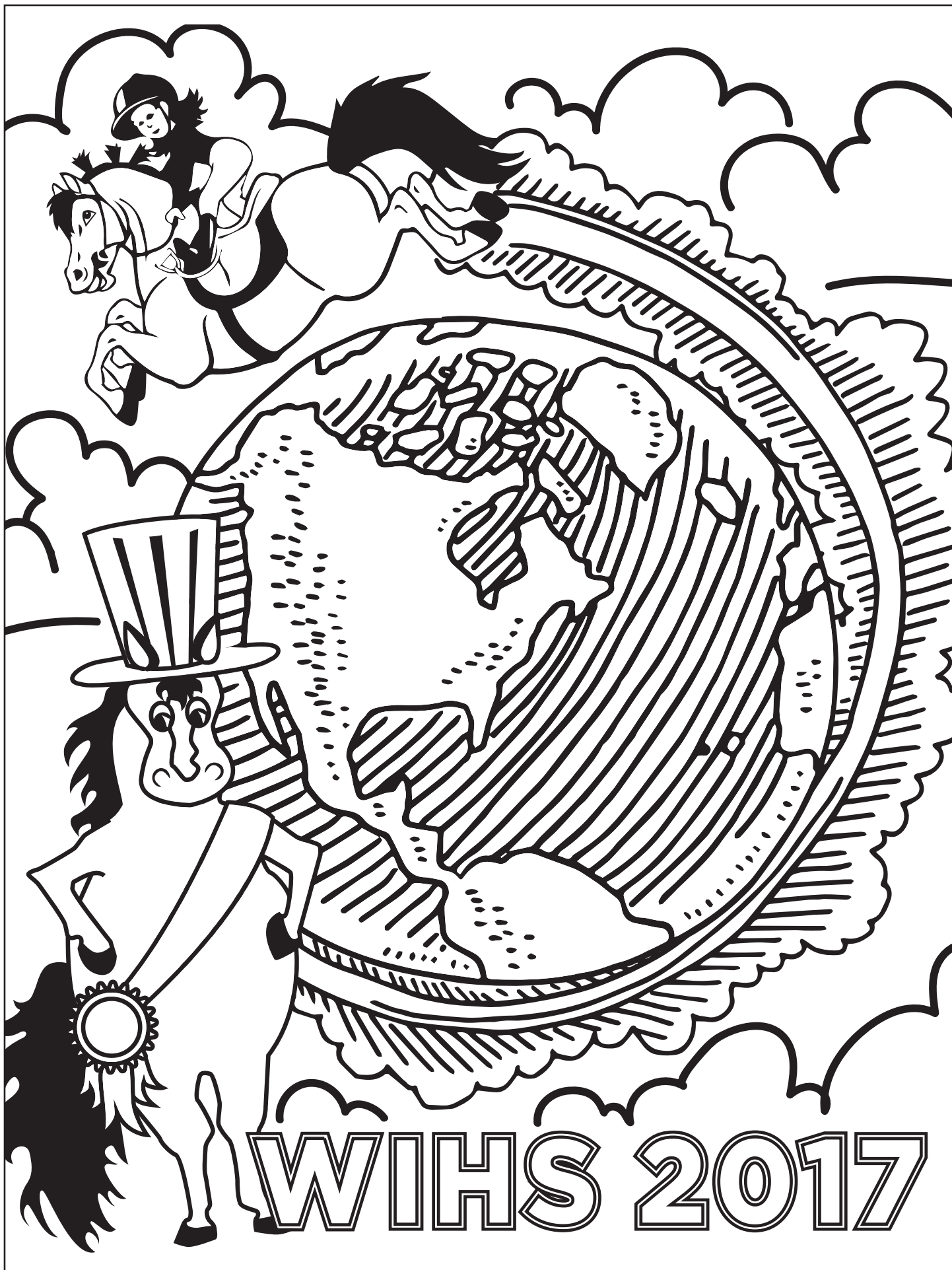
___ CROUP

___ TAIL

___ KNEE

___ HOOF

___ CHESTNUT



Barn Night Word Find

P P O S T E R C O N T E S T D L T B M D M C Y O X D H R C C
 K I X T H X G R O R K J R P O A X Q S L Z A G X E O Y P U J
 I W Y S A F Z P X A T W C C O L F A T M P I Q T Y V C J C C
 K L B K M R U P W C H A R L E S O W E N X G R Q X E A Q A K
 J R R X H C H O W M F C L O T H E S H O R S E D Z R C W N O
 E Z I Q A P S N Z A T R T N P Y F D T U U V K P C S L B D Y
 Q R L X C Z O Y B T L T M V D P Y R J V V J T W D A Q P Y P
 U W T H O H P R E U E G S M B Z U B T W J W Q Q D D D G G L
 I B J R L W B A R N N I G H T T K O L M P M A P W D I E O L
 E Z E H O V H C A T V F J M H P S Q R A C C U M U L A T O R
 R W M Z R M E E F R C W J H E C X P U D T N B Q K E W S M A
 Y H K G G A E S W K P L Q W Q L S V E N D X K T M R P E H C
 R S U U U R W P G T J X J O C E P V S S U Z S V C Y F I A Z
 G F S H A S U H K S C Z P A H A R X H P S B P O N F V B L Y
 O N Y A R E Y V T C O B E T R R I M F L U S X B A K E A L R
 L D O P D Q E C R T K C Q F Q F N Q F J K H U B S K Z R O S
 F W E T P U M P K I N S I A E O G O U X L I T F U N Q N W W
 C H A R L E S A N C O N A P N R T V B H X I D V K W U N E E
 A B U C O S T U M E C L A S S T I E L B K U B Q K T U I E L
 R B P M Q T A C L N H M W P I H M B K Y B B J R T J Z G N C
 T G H K D R Q G A P E W M D E E E A E Z B K C M T U I H Y O
 J S P I R I T F W Y W U L Q R C P S I M R L X E M S V T U M
 T X E T T A M B B U H N L L I U Q V O W K H P Z H C O C Z E
 P S O T Y N Y Y I T P Q U L A R G E S T G R O U P L K L C S
 N J U N I O R C O M M I T T E E K X N B R H F R D P S I Q T
 J B M R W Y A W X C P M J Q N V L Q R K E D Z W M T W N Y A
 J B X N S D J N C G L N J D J U E J F L E G L V C S J I D K
 Q T N U S E Q U E S T R I A N E B A R N M A N A G E R C F E
 V E H E Y P V M A J O R O T X Q W M T C M G E E S W G S N P
 S I D C N S S K I O G P X G D L V U W I R E M A O G Z K I E

BARNNIGHT
 WELCOMESTAKE
 PONYRACES
 CHARLESOWEN
 COSTUMECLASS
 ACCUMULATOR
 MAJOR
 COLORGUARD
 JUNIORCOMMITTEE

HALLOWEEN
 CANDY
 FUN
 SPIRIT
 GOLFCART
 MARSEQUESTRIAN
 BARNNIGHTCLINIC
 BARNMANAGER
 EQUIERY

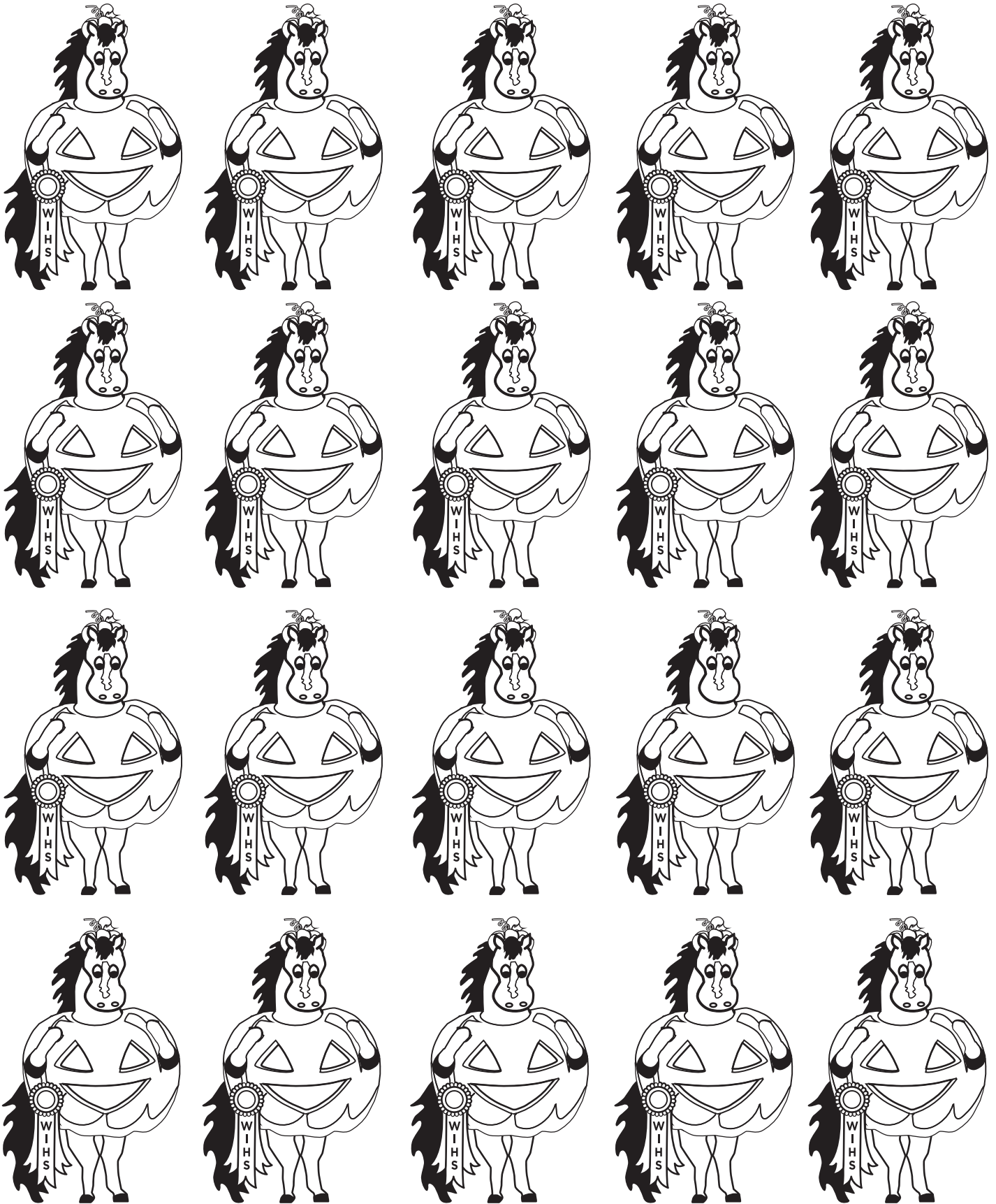
CLOTHESHORSE
 PUMPKINS
 DOVERSADDLERY
 SPRINGTIME
 LARGESTGROUP
 POSTERCONTEST
 CLEARFORTHECURE
 CHARLESANCONA
 USEQUESTRIAN

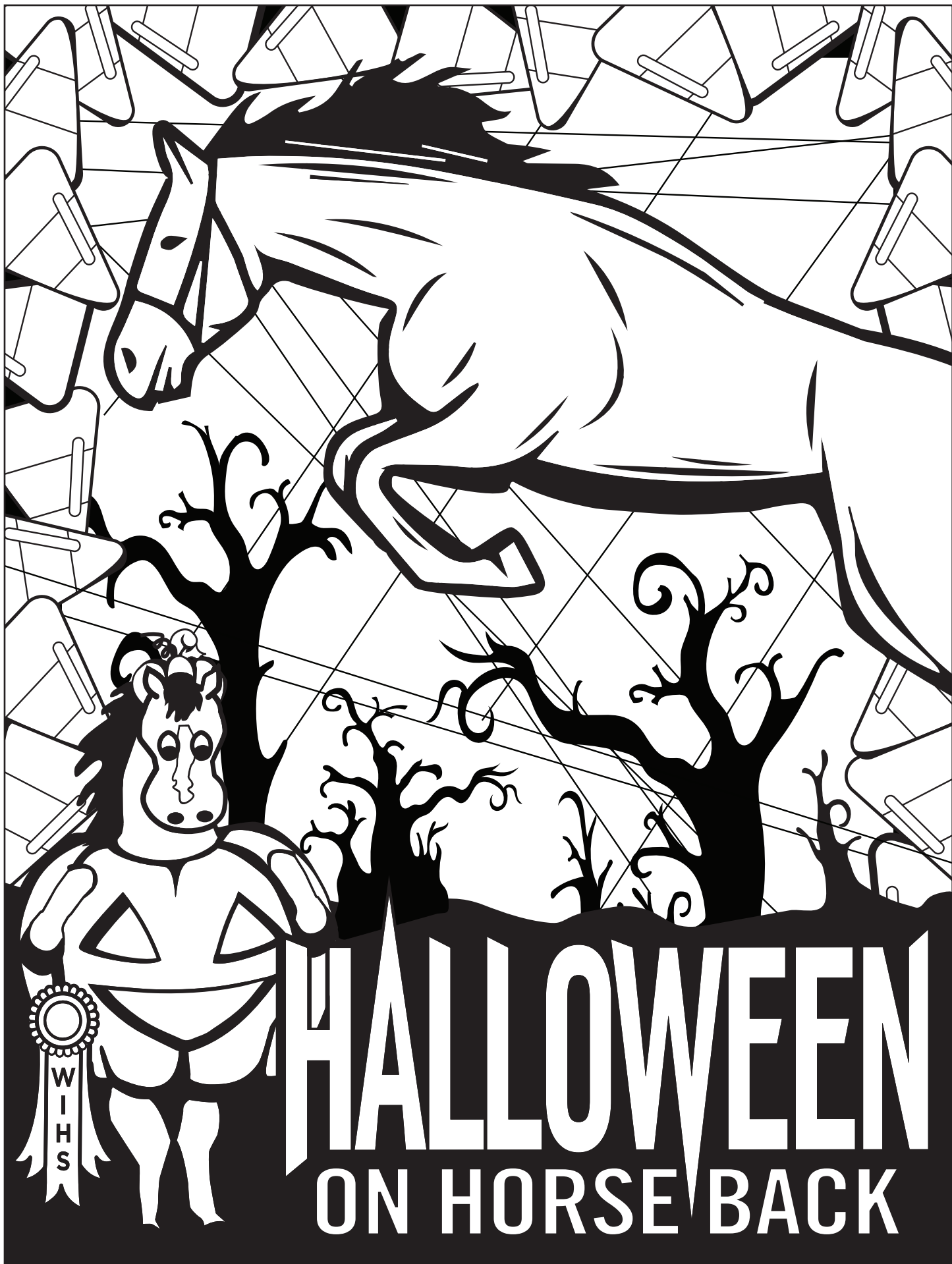


HORSES THROUGH THE DECADES

WIHS 2018

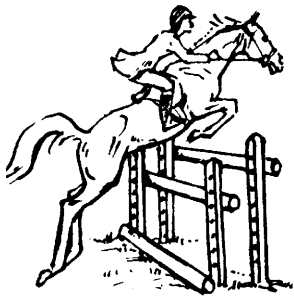
Which Major is Different?



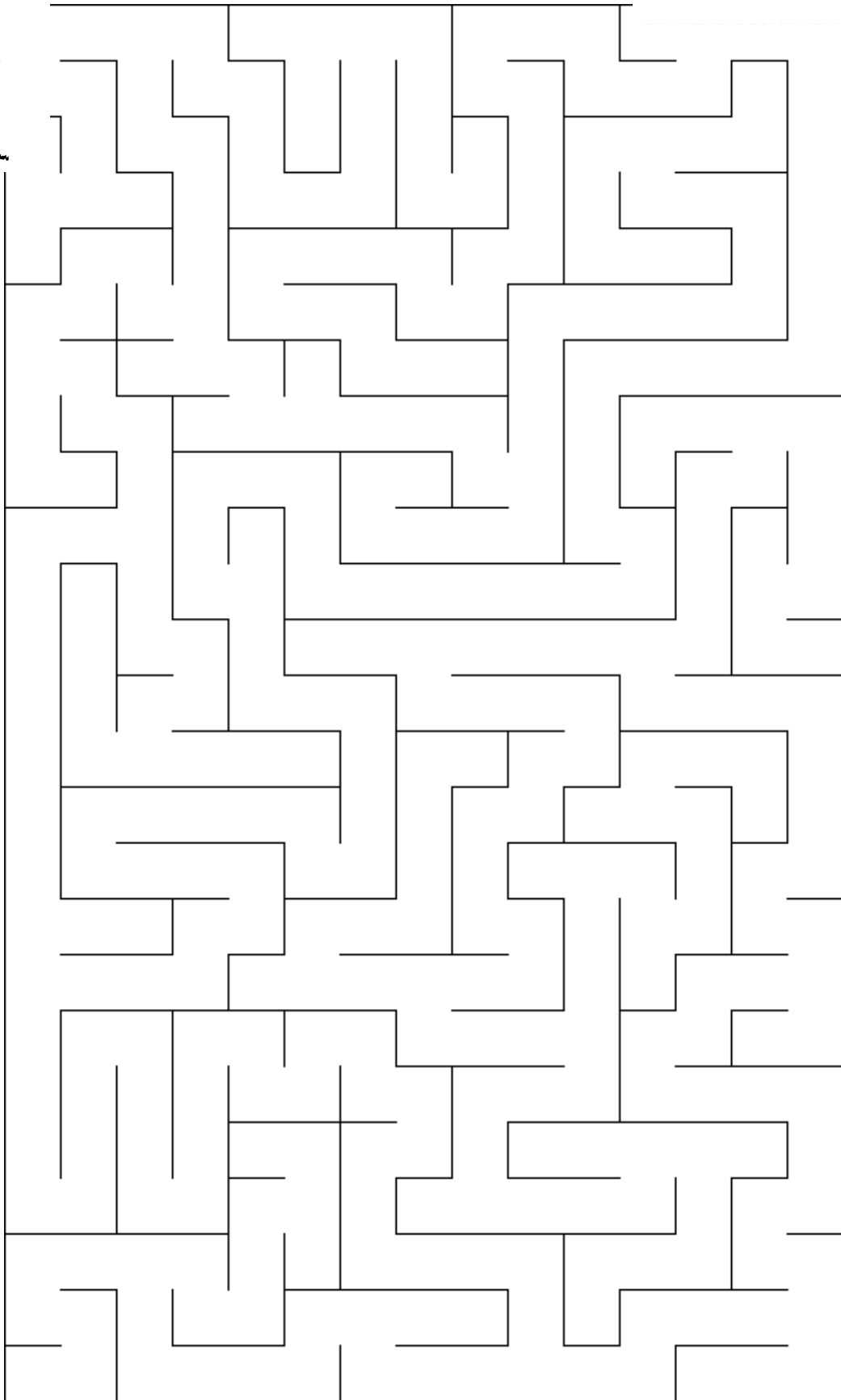


HALLOWEEN

ON HORSE BACK



Ride to the ribbon



WIHS Horse Trivia Crossword

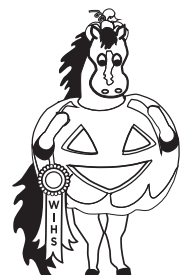
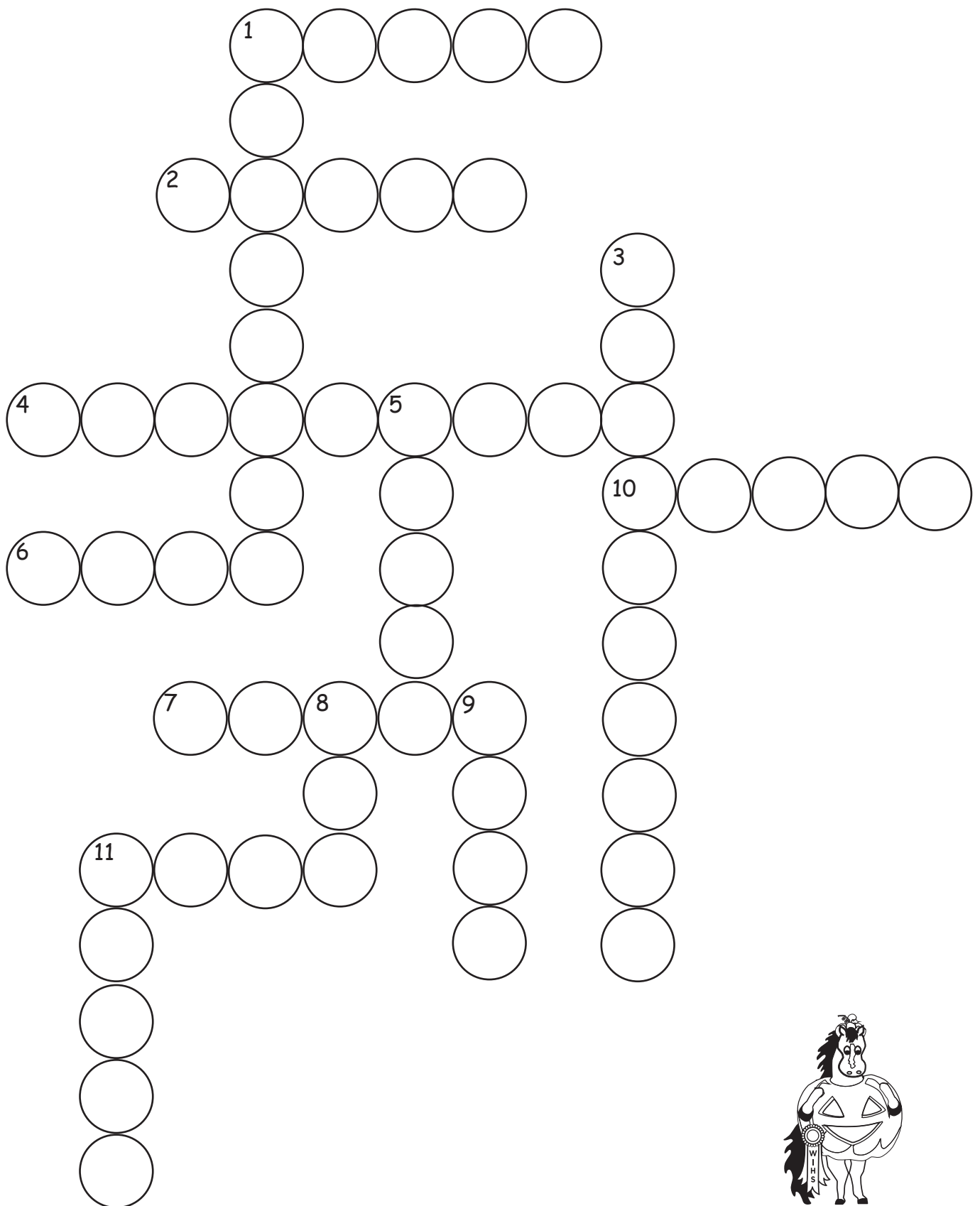
ACROSS

1. Horses can _____ standing up.
2. Horses can't breathe through their _____.
4. A horse is a member of the 'equus' family. This word comes from ancient Greece and means _____.
6. Horses use their _____ and eyes to show their moods.
7. If you want to know how old a horse is, all you need to do is count its _____.
10. Horses and ponies are measured in _____.
11. Braiding the _____ is a tradition that dates back over a hundred years

DOWN

1. Horses have small _____ for their size and need to eat little and often.
3. The WIHS logo shows the first president George _____ on a horse.
5. Horses have better vision at _____ than people.
8. A horse sees two different images from each _____.
9. The _____ of a horse never stops growing, like a fingernail.
11. Washington International Horse Show mascot's name _____.





solve the puzzle!
 Need some answers? <https://wihs.org/barn-night/>

